

Zion Road
(C.R. 615)
50' ROW

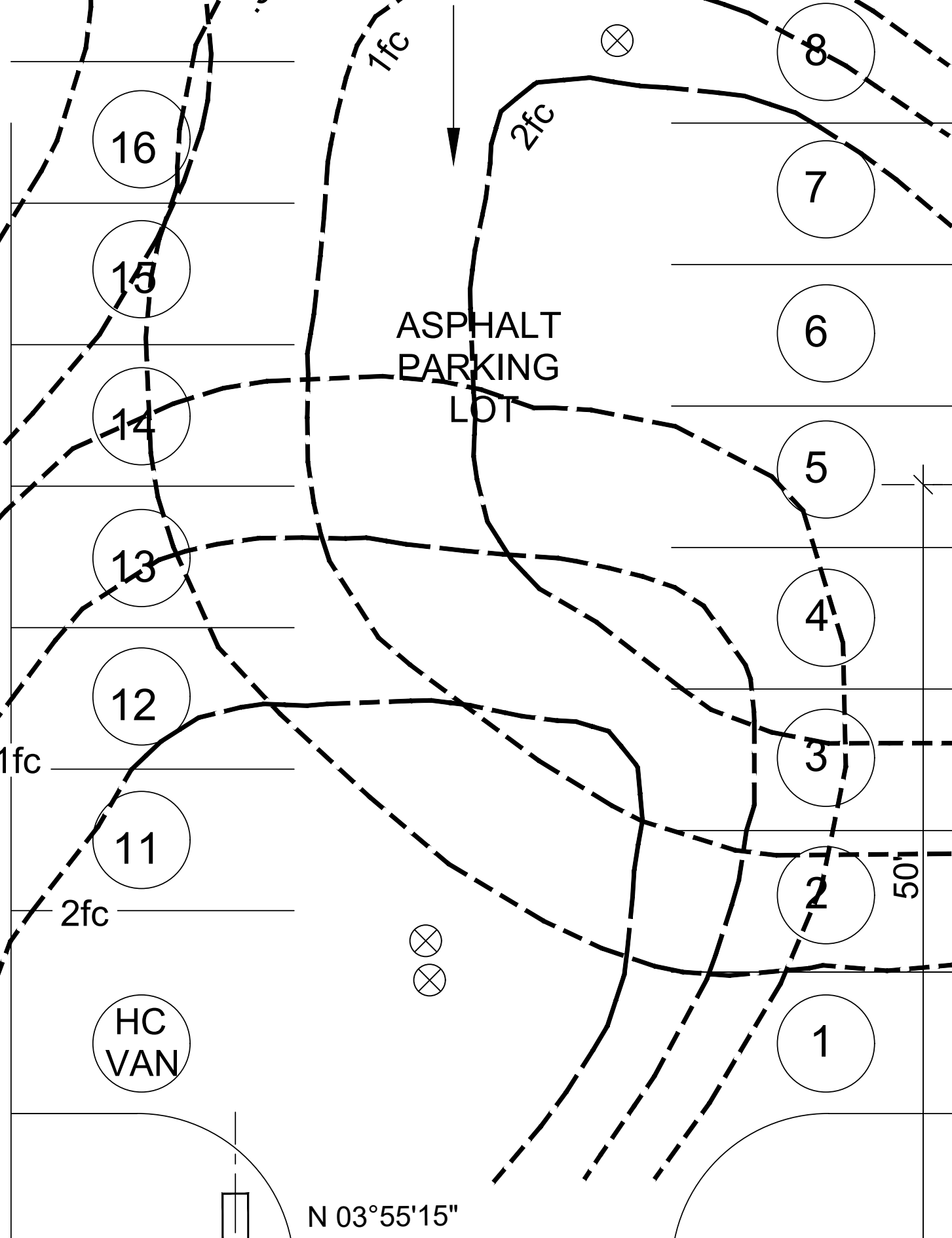
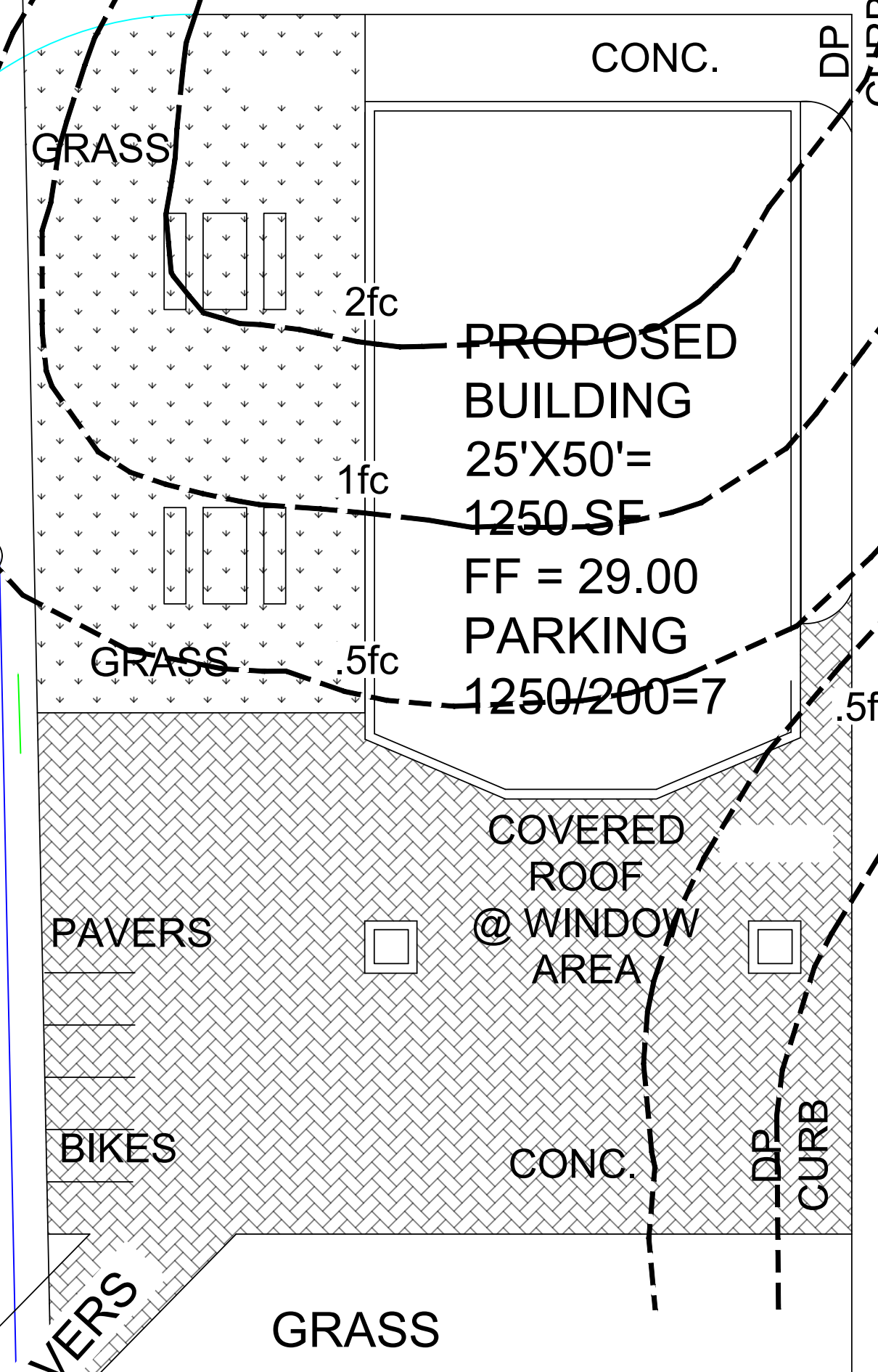
PAVED DRIVE AISLE TO LOT 9



DOUBLE ROW ARBORVITAE
TRASH AND RECYCLE
S 03°55'15"
E 125.00'

10' BUFFER

BEACON VIPER "L SERIES"
TYPE IV 25' LIGHT POST



BEACON VIPER "L SERIES"
TYPE IV 25' LIGHT POST

10' BUFFER

N 03°55'15"
W 125.00'

BEACON VIPER "L SERIES"
TYPE IV 25' LIGHT POST

Tilton Road
(C.R. 563)
60' ROW

DETECTABLE WARNING SURFACE

5' SIDEWALK

DP CURB

5' SIDEWALK

SITE LIGHTING

SCALE: 1/8" = 1'-0"

ADDITIONAL HIGH HATS UNDER
5'-0" OVERHANG

R.D. Green Engineering

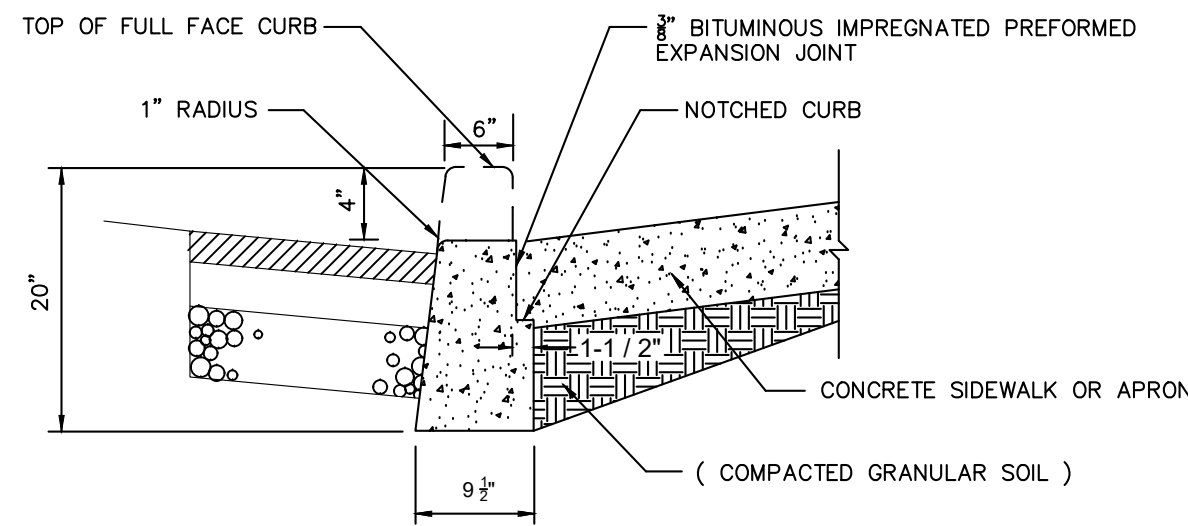
Structural, Foundation, & Marine Engineering
1512 Atkinson Avenue, Somers Point NJ, 08244
Phone 609-926-5182 Fax 609-926-5185

Robert Douglas Green, P.E.
Professional Engineer
New Jersey License No. 24GE026637

Site Lighting

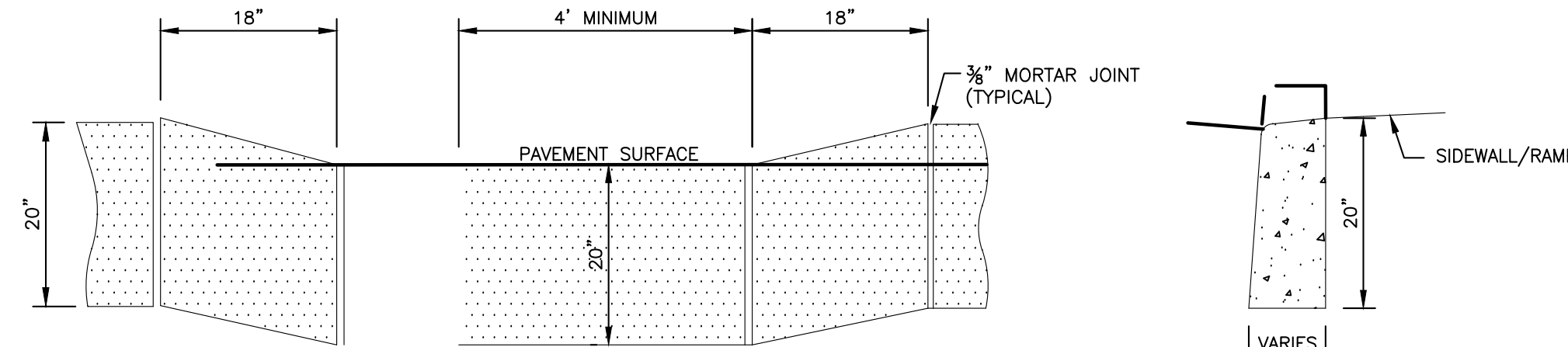
The Big Cone
1600 Tilton Road
Northfield, New Jersey 82225
Block: 97, Lot: 8

Date 12-17-21	Drawn By BD	Project No.	Sheet Number
Scale 1/8" = 1'-0"	Checked By RDG	Drawing Number	S3



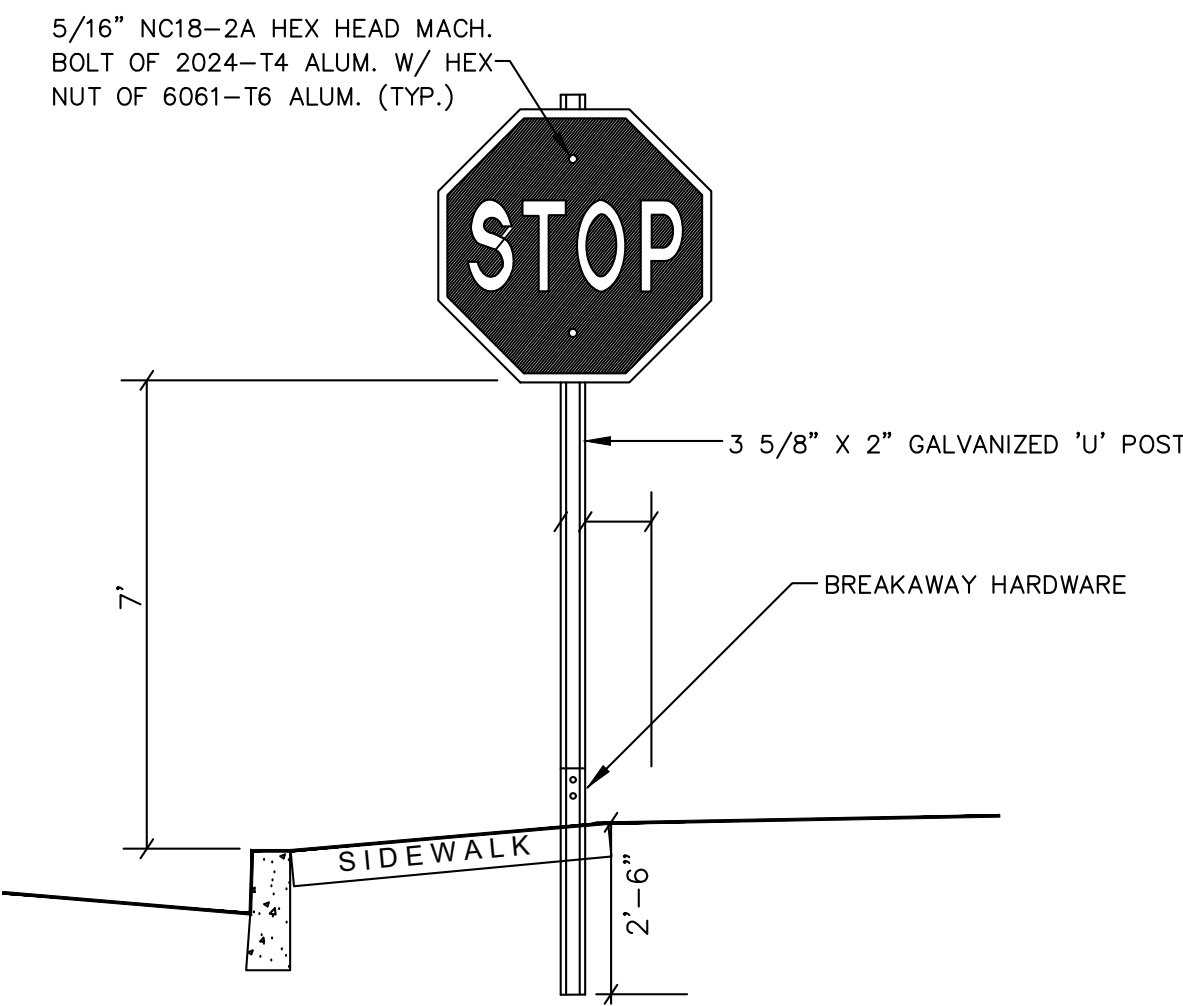
NOTE:
TO BE USED AT ALL DRIVEWAYS AND WHERE ADJACENT TO SIDEWALK

1 NOTCHED CURB DETAIL
S4 SCALE: N.T.S.



ELEVATION SECTION

2 DEPRESSED CURB AT HANDICAPPED RAMP DETAIL
S4 SCALE: N.T.S.

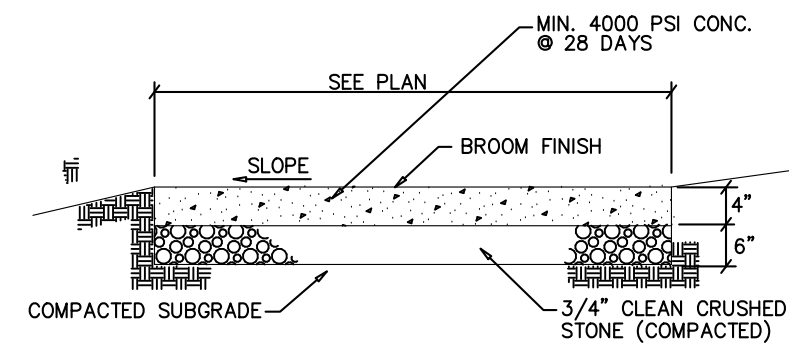


NOTES:
1.) ALL SIGN INSTALLATION SHALL CONFORM TO N.J.D.O.T. STD. SPECIFICATIONS
2.) A RESILIENT ASBESTOS OR FIBER 5/16" I.D. WASHER SHALL BE PROVIDED BETWEEN THE BOLT AND THE SIGN FACE
3.) SIGN PLACEMENT SHALL BE IN ACCORDANCE WITH THE MANUAL ON UNIFORM TRAFFIC CONTROL DEVICES, LATEST EDITION.

8 WARNING/REGULATORY SIGN DETAIL
S4 SCALE: N.T.S.

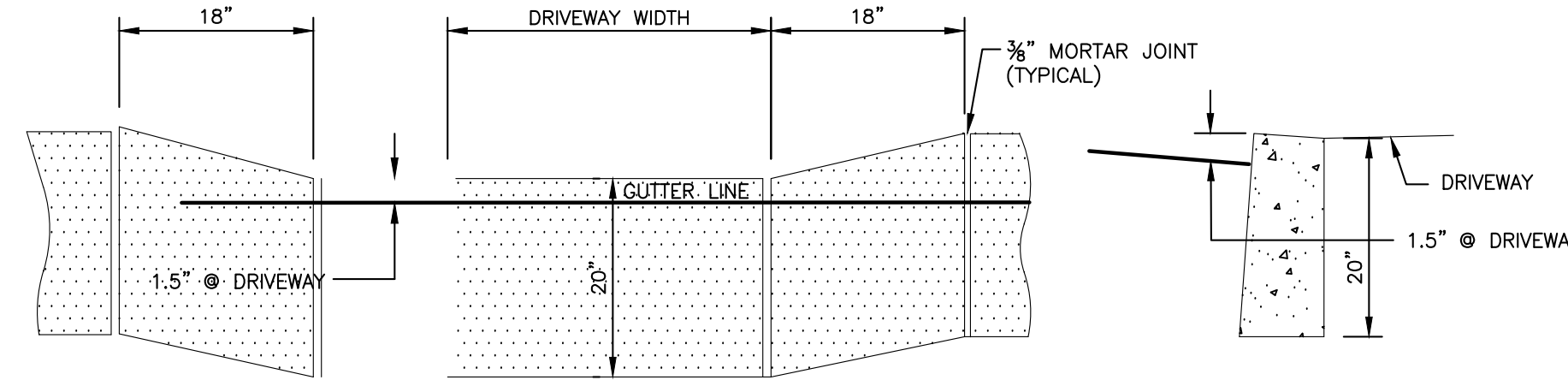


11 HANDICAP SIGN DETAILS
S4 SCALE: N.T.S.



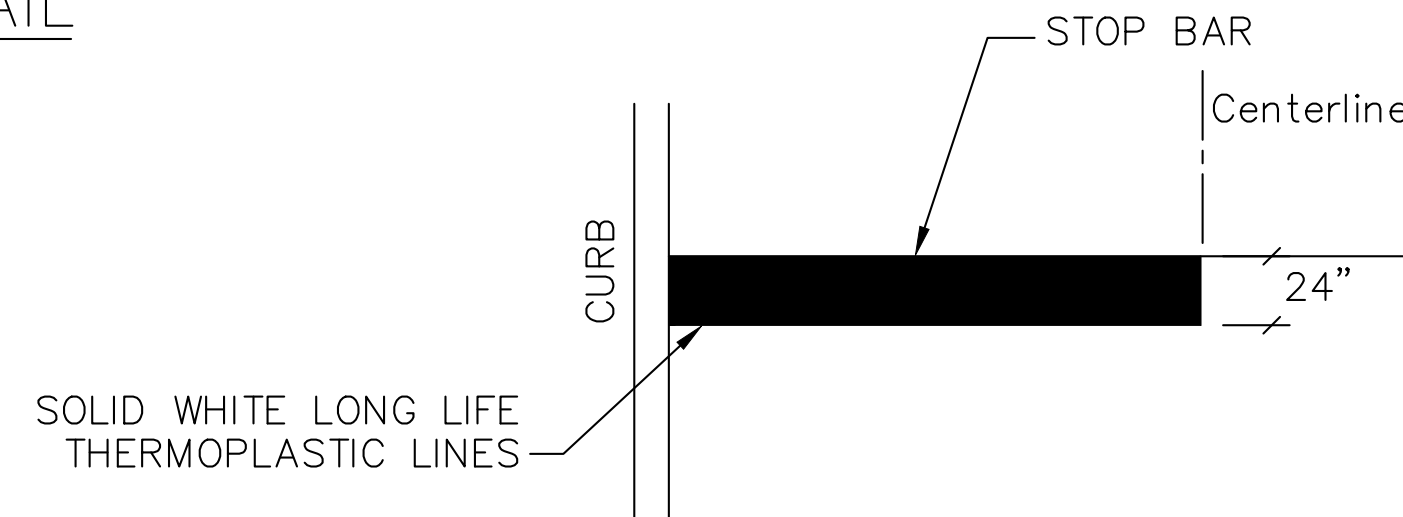
NOTES:
1.) AT DRIVEWAY CROSSINGS, SIDEWALK SHALL BE 6" THK. AND SHALL CONTAIN NO. 10 6" x 6" WIRE MESH 2" UP FROM THE BOTTOM OF THE SIDEWALK.
2.) THE ENGINEER SHALL APPROVE ALL SUBGRADES PRIOR TO THE POURING OF ANY CONCRETE.
3.) EXPANSION JOINTS SHALL BE PROVIDED AT 20' (MAX.) INTERVALS. JOINTS SHALL BE FILLED WITH 1/2" BIT. EXPANSION JOINT FILLER.
4.) PROVIDE HALF DEPTH CONTRACTION JOINTS EVERY 4 FEET (MIN). JOINT PATTERN TO MATCH EXISTING PATTERN ON SOUTH MAIN STREET.
5.) SLOPE AT PEDESTRIAN ACCESS ROUTE SHALL BE 2.00% MAX.

3 CONCRETE SIDEWALK DETAIL
S4 SCALE: N.T.S.

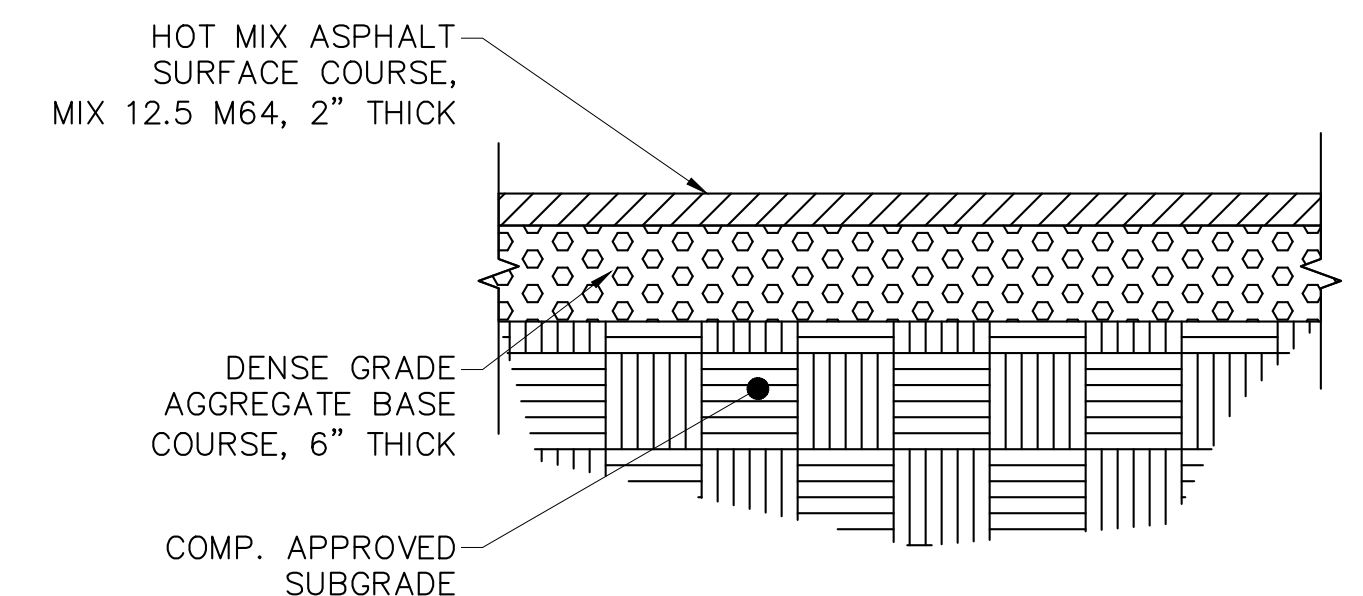


ELEVATION SECTION

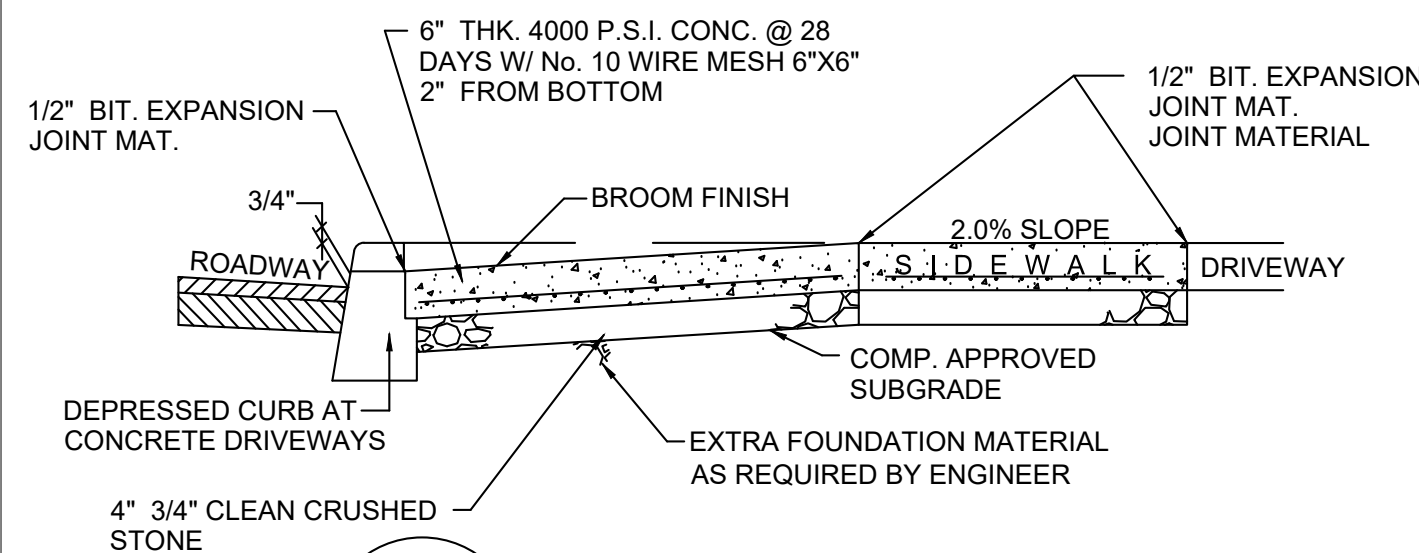
4 DEPRESSED CURB AT DRIVEWAY DETAIL
S4 SCALE: N.T.S.



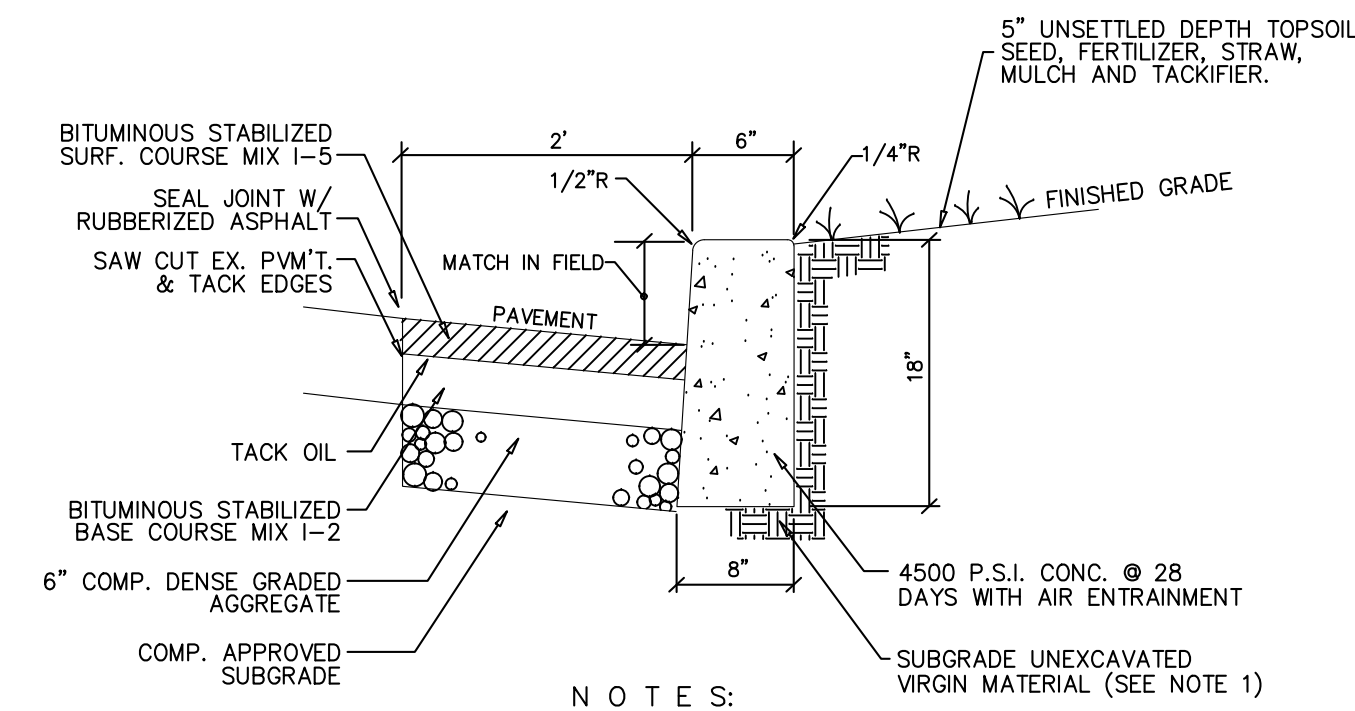
9 STOP BAR DETAIL
S4 SCALE: N.T.S.



12 TYPICAL PAVEMENT CROSS SECTION
S4 SCALE: N.T.S.

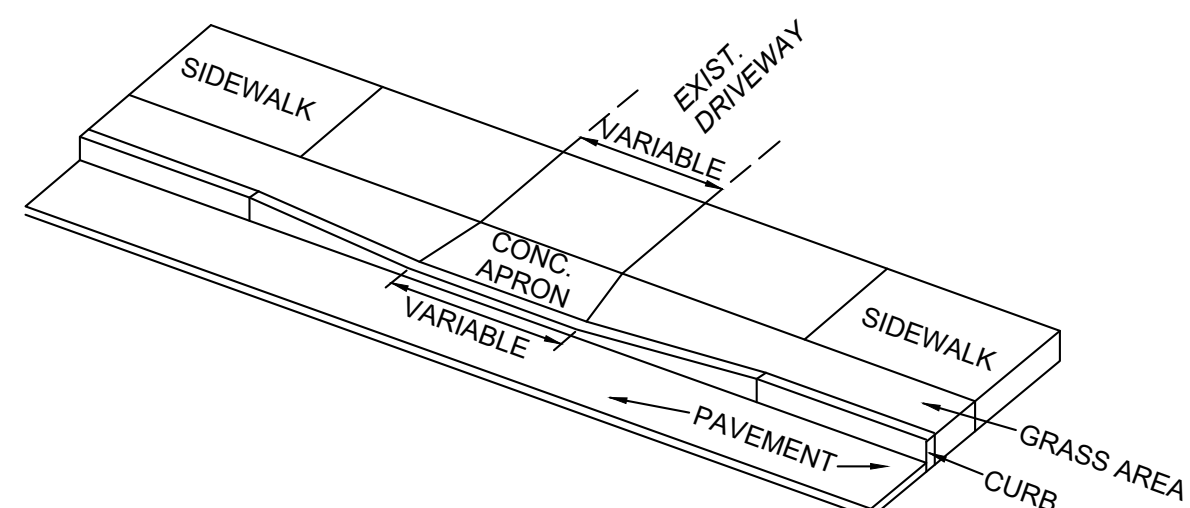


5 CONCRETE DRIVEWAY DETAIL
S4 SCALE: N.T.S.

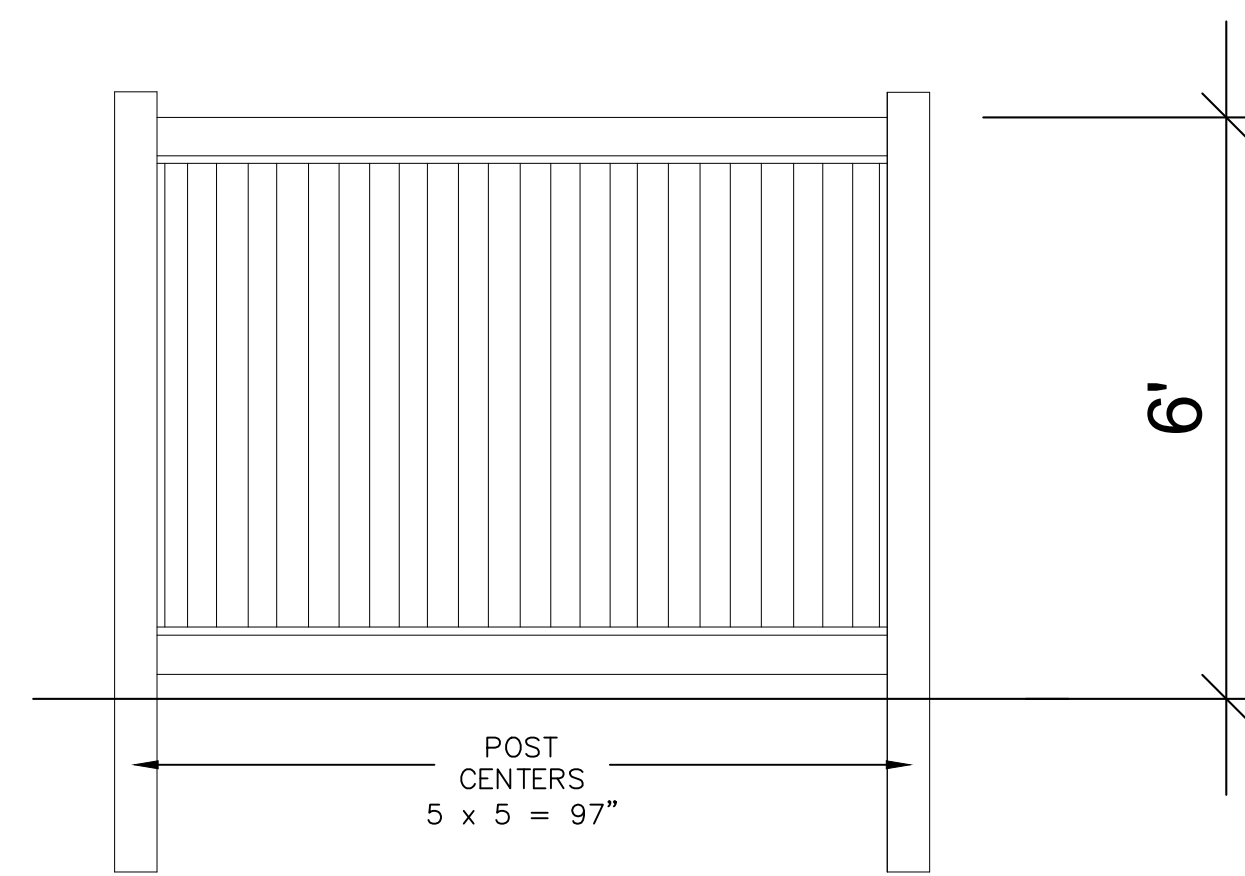


NOTES:
1.) ANY EXCAVATION BELOW DESIRED GRADE DUE TO OVER EXCAVATION OR WET SOIL CONDITIONS SHALL BE BACKFILLED WITH 3/4" CLEAN CRUSHED STONE. ALL SUBGRADES SHALL BE APPROVED BY THE ENGINEER PRIOR TO POURING.
2.) EXPANSION JOINTS SHALL BE PROVIDED AT EQUAL DISTANCES OF NOT MORE THAN 20' AND AT ALL STORM SEWER INLETS. JOINTS SHALL BE FILLED WITH PREMOULDED EXPANSION JOINT FILLER, 1/2" THICK, CONFORMING TO NEW JERSEY DEPARTMENT OF TRANSPORTATION STANDARD SPECIFICATIONS FOR ROAD AND BRIDGE CONSTRUCTION. CONTRACTION JOINTS SHALL BE PROVIDED EVERY 10'. THE JOINT SHALL BE RECESSED 1/4" FROM THE TOP AND FRONT OF THE CONCRETE CURB.
3.) CURB SHALL BE TEMPORARILY BACKFILLED TO FINISHED GRADE WITH SOIL BEHIND AND STONE ON THE ROAD SIDE AS SOON AS IT HAS ATTAINED SUFFICIENT SUPPORTING STRENGTH OR WITHIN 24 HOURS OR POURING (WHICH EVER IS LESS).
4.) WHEN NEW CURB IS INSTALLED ALONG AN EXISTING PAVED AREA, THE EXISTING PAVEMENT SHALL BE CUT 2 FEET IN FRONT OF THE NEW CURB FACE IN A STRAIGHT LINE WITH A CUTTING WHEEL OR PNEUMATIC HAMMER. THE NEW PAVEMENT SHALL BE TACKED AND BUTTED TO THE EXISTING PAVEMENT. THIS COST IS TO BE INCLUDED IN THE LINEAR FOOT PRICE BID FOR CONCRETE CURB.
5.) THE GRASS AREA BETWEEN THE CURB AND SIDEWALK, AND ALONG OTHER LIMITS OF DISTURBANCE ARE TO RECEIVE 5" OF UNSETTLED DEPTH TOPSOIL, SEED, FERTILIZER, STRAW, MULCH AND TACKIFIER.

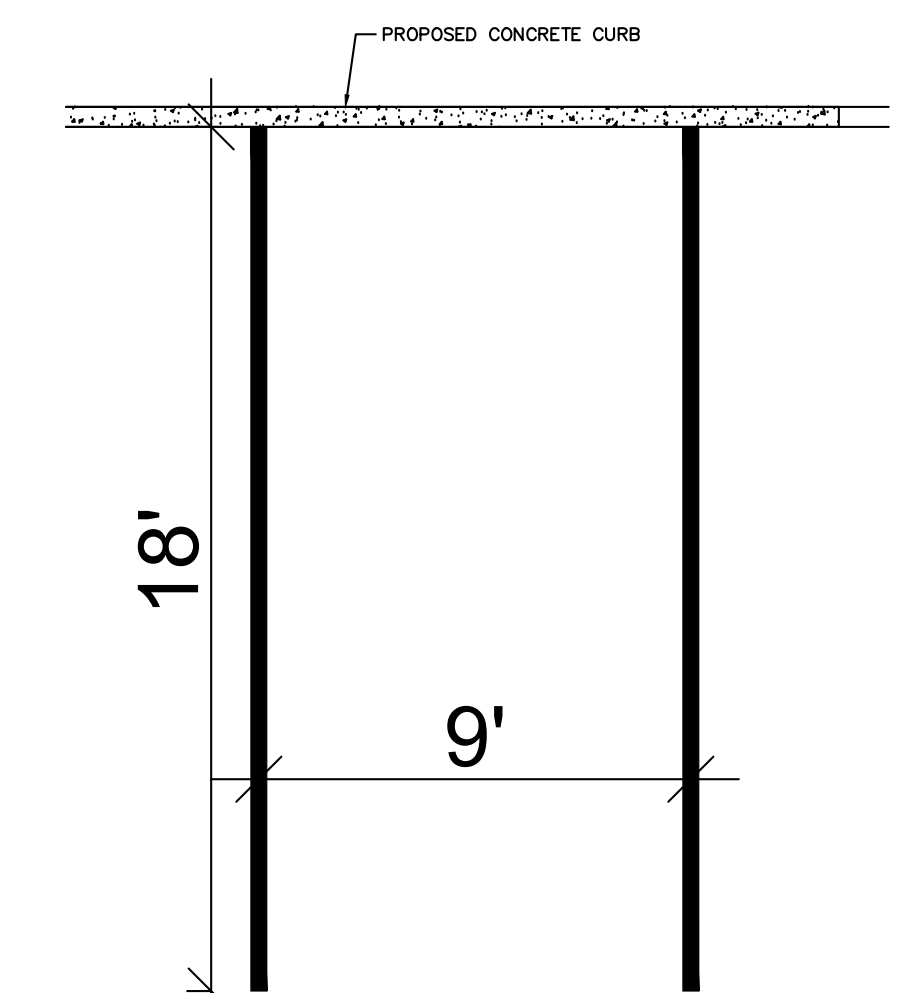
7 CONCRETE CURB
S4 SCALE: N.T.S.



6 CONCRETE DRIVEWAY APRON
S4 SCALE: N.T.S.

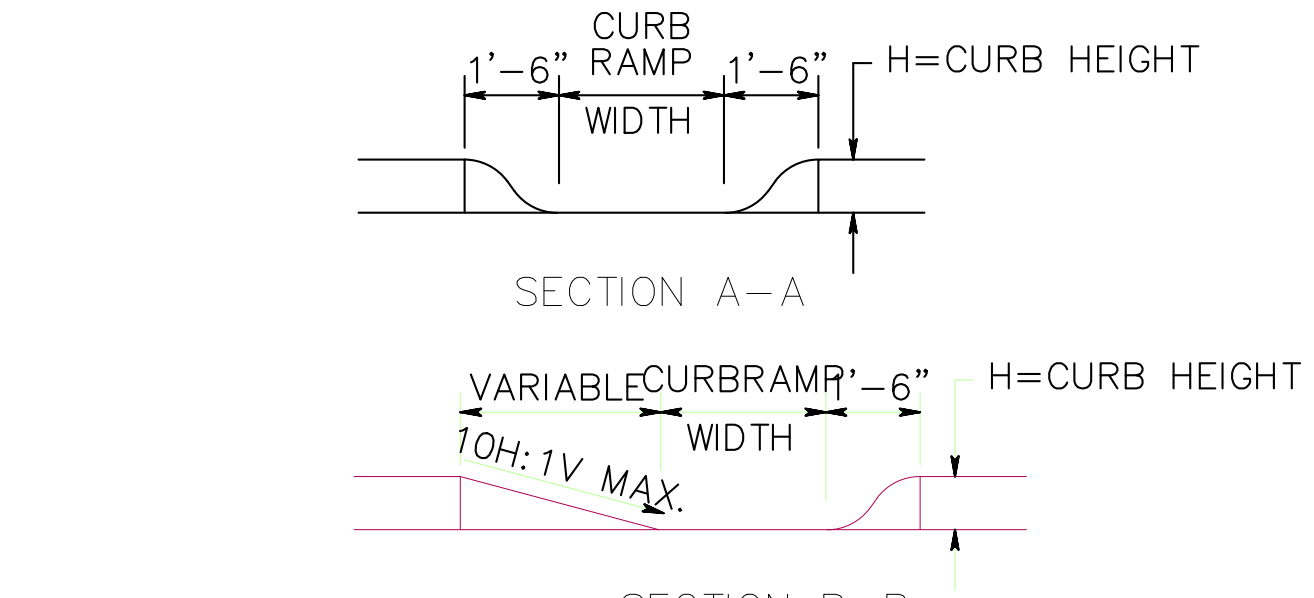
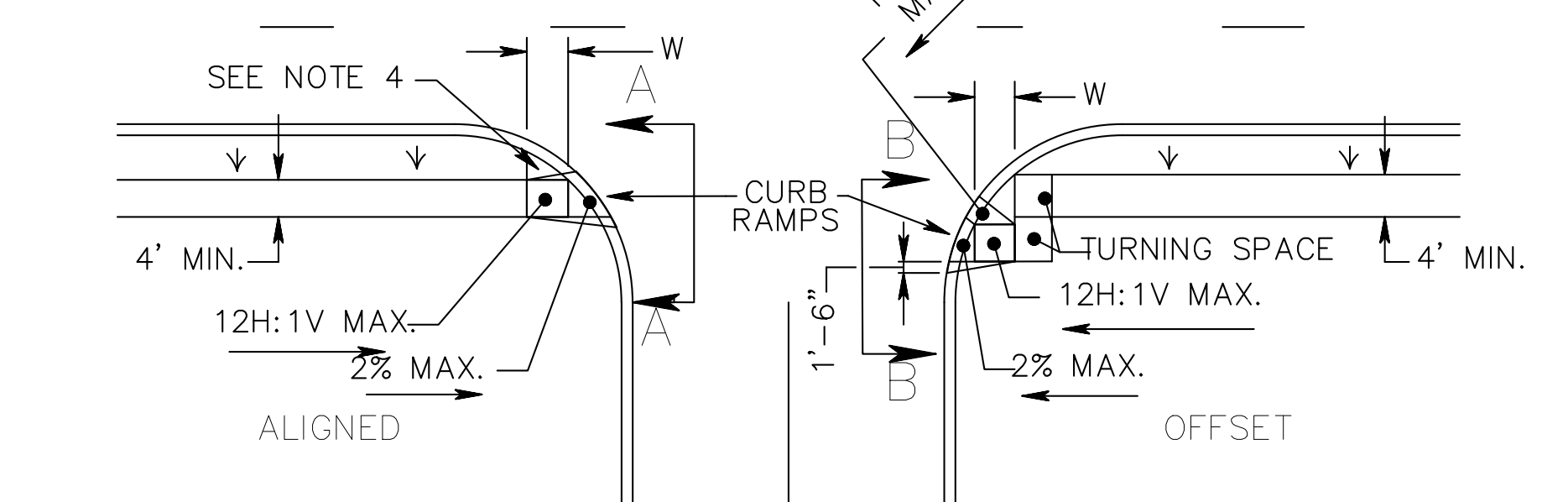
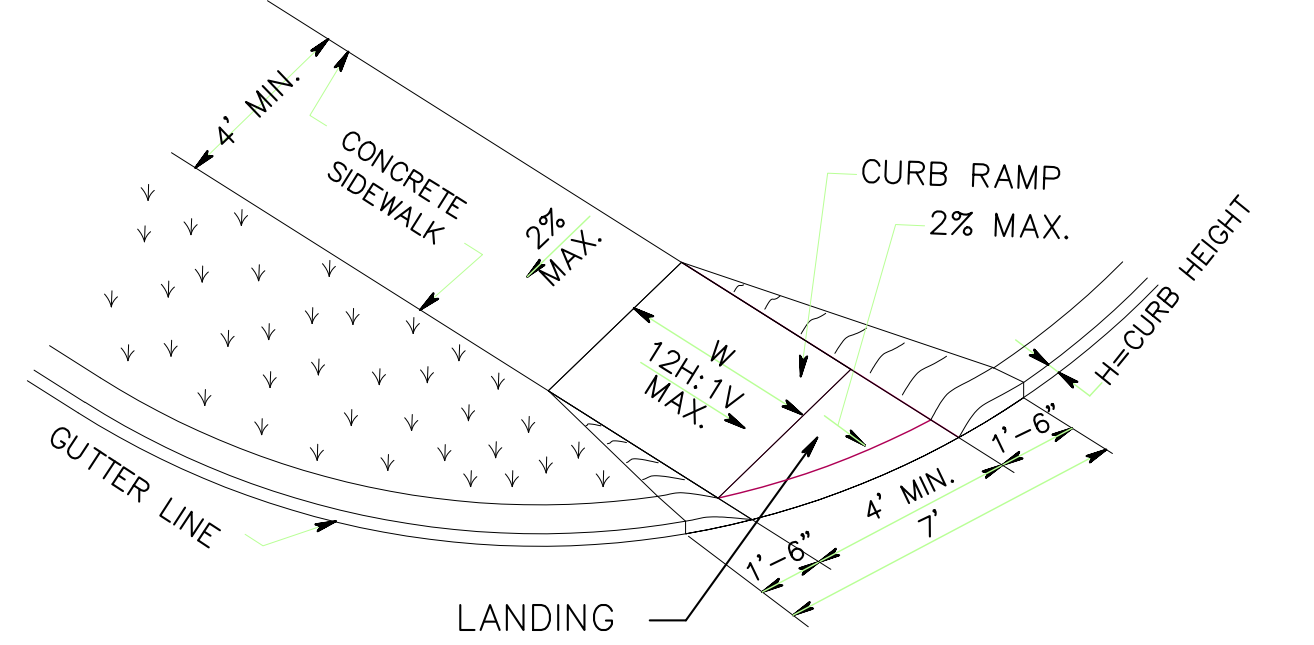
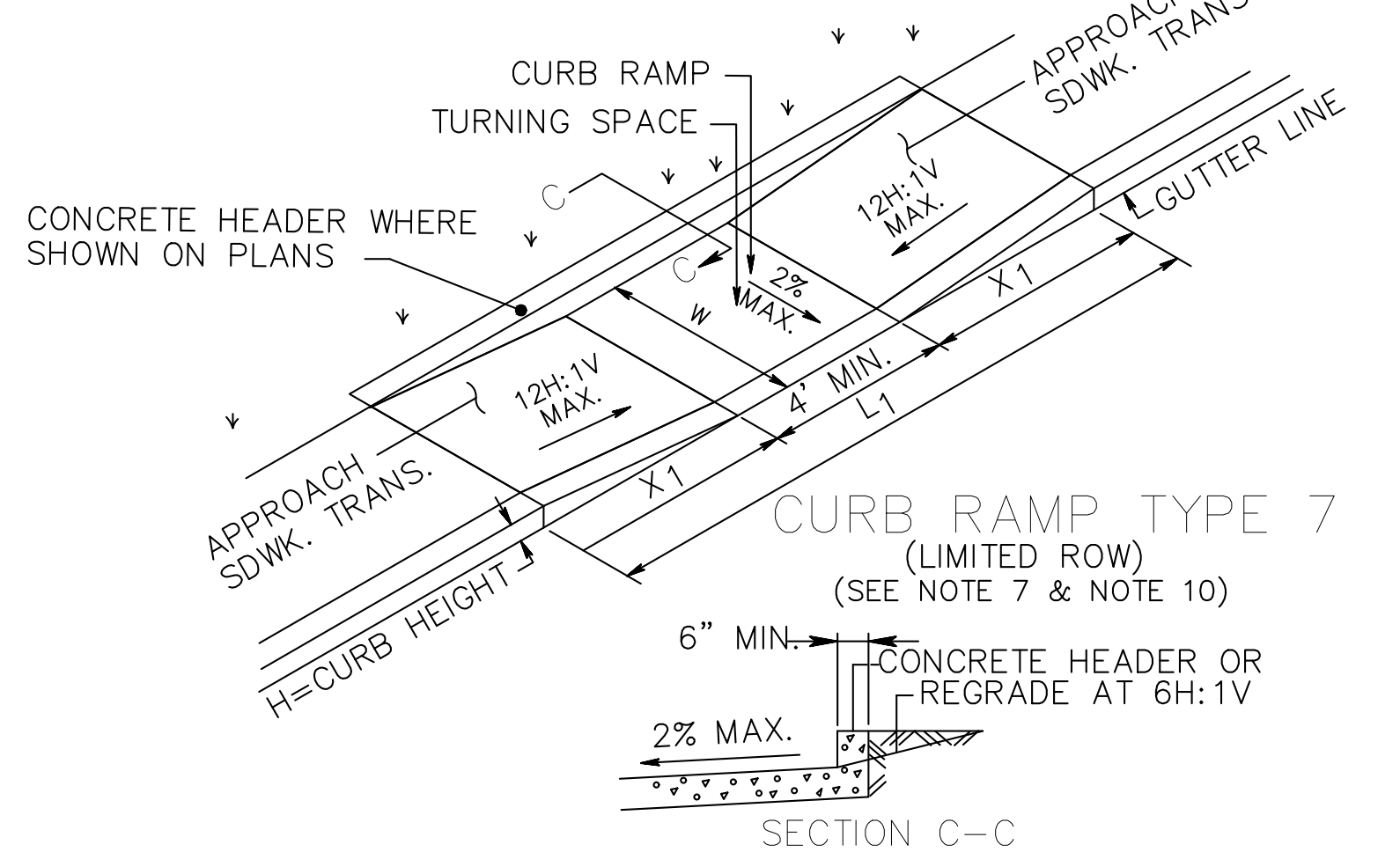
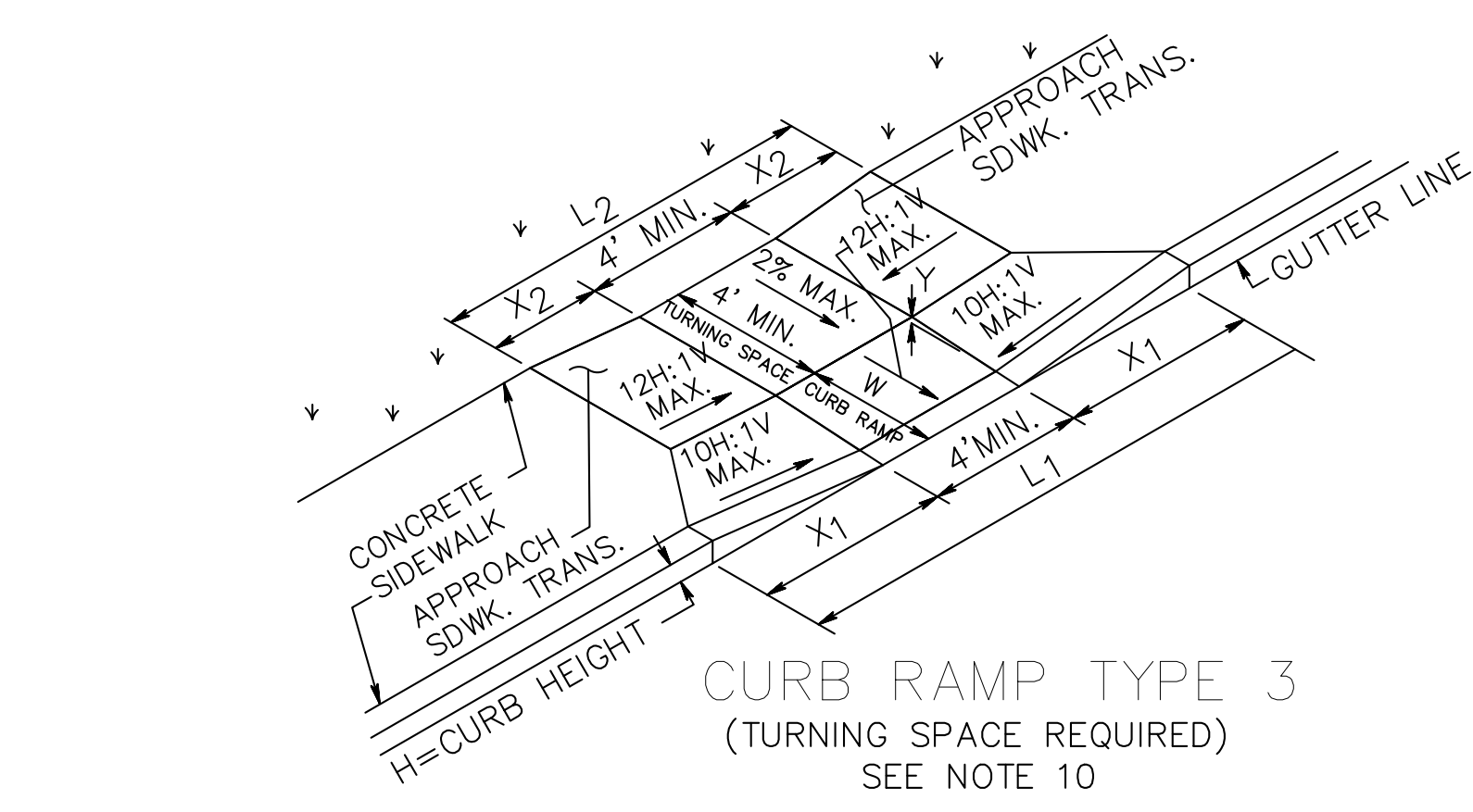


10 6FT HIGH FENCE
S4 SCALE: N.T.S.

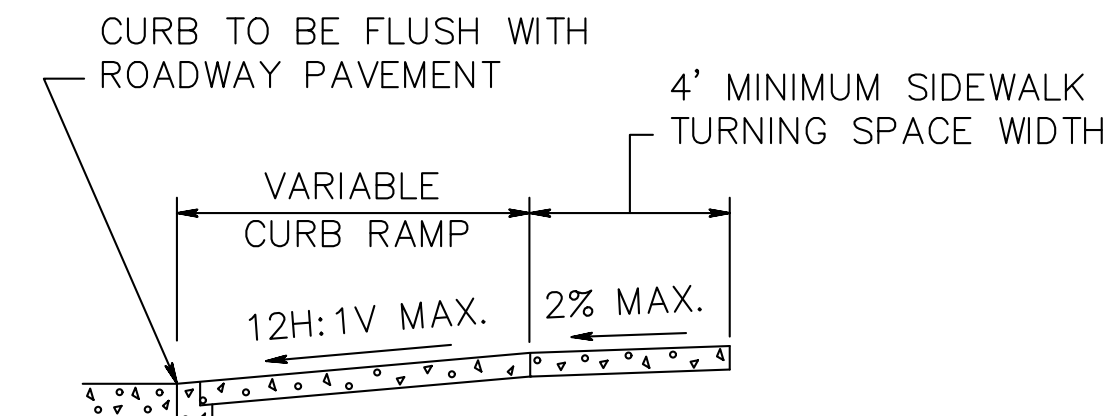


13 TYPICAL PARKING DETAIL
S4 SCALE: N.T.S.

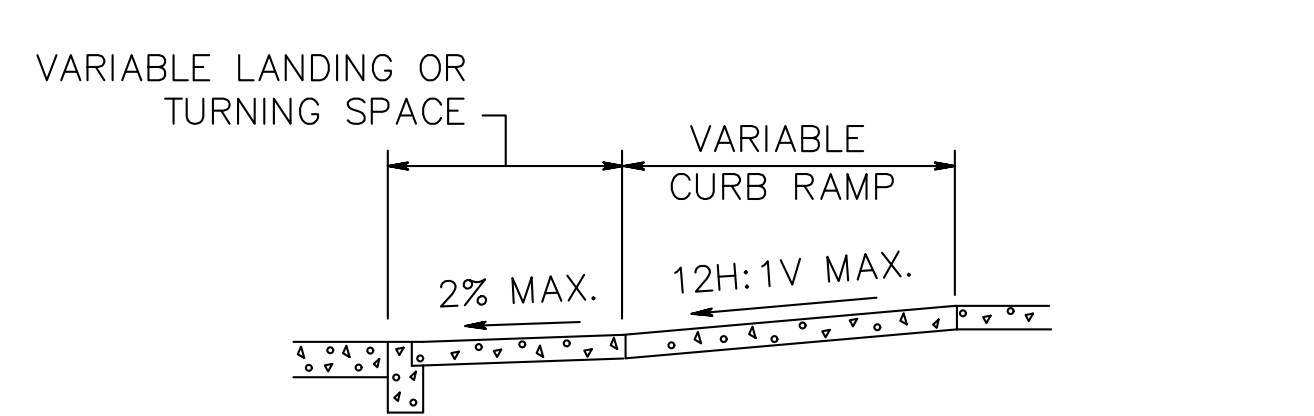
R.D. Green Engineering Structural, Foundation, & Marine Engineering 1512 Atkinson Avenue, Somers Point NJ, 08244 Phone 609-926-5182 Fax 609-926-5185		Details The Big Cone 1600 Tilton Road Northfield, New Jersey 82225 Block: 97, Lot: 8	
Robert Douglas Green, P.E. Professional Engineer New Jersey License No. 24GE026637	Date: 12-17-21 Scale: 1/8" = 1'-0"	Drawn By: BD Checked By: RDG	Project No.: Drawing Number: S4



NOTE:
CURB RAMP OPENING TO BE FLUSH WITH ROADWAY PAVEMENT (CURB RAMP TYPES 5 & 6).

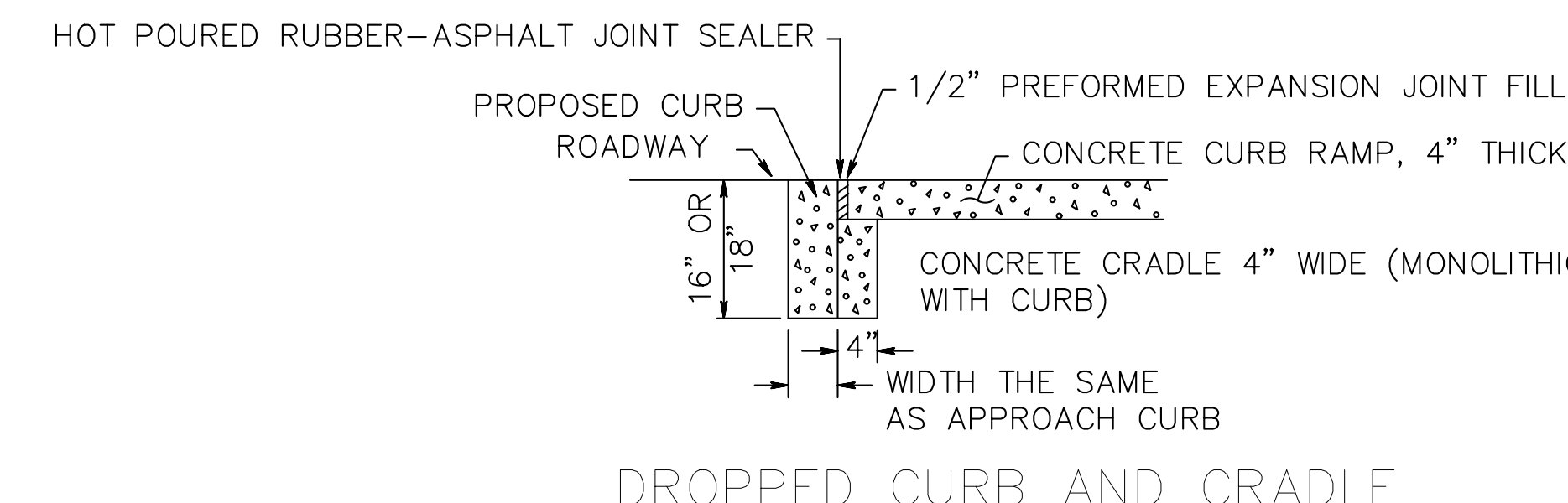


SECTION THROUGH CURB RAMPS 1 THROUGH 4

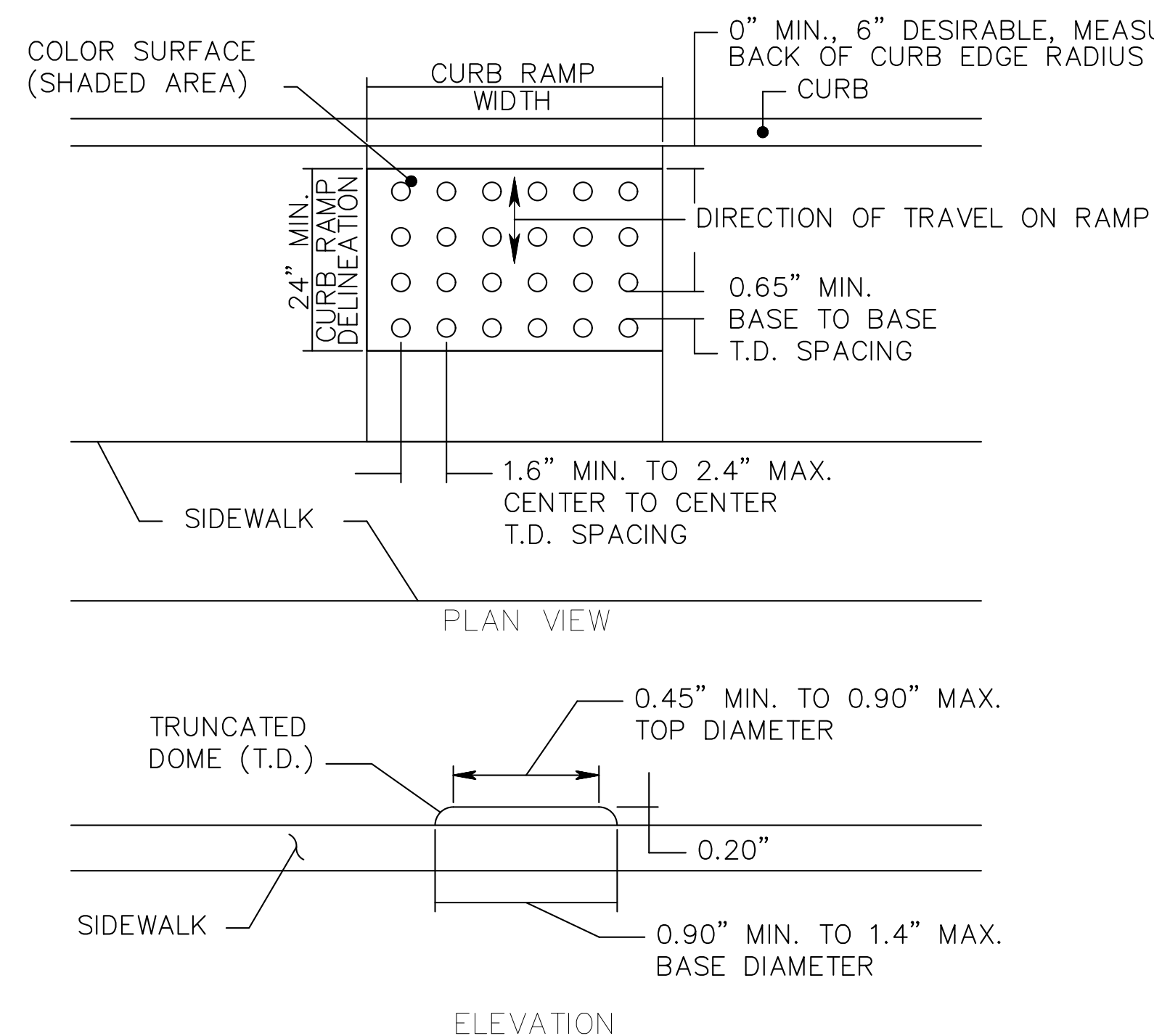


SECTION THROUGH CURB RAMPS 5 AND 6

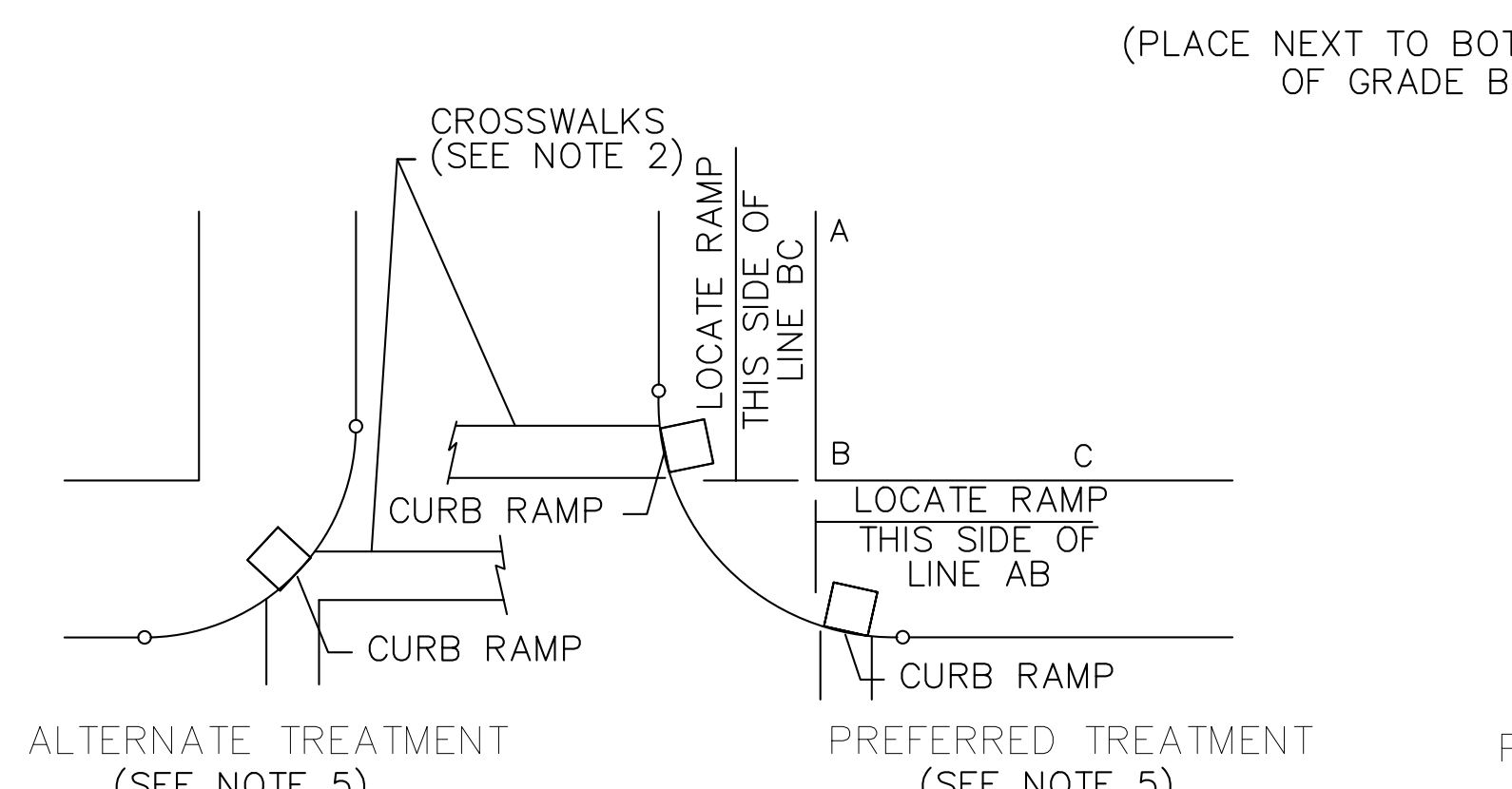
- NOTES:
- KEEP TURNING SPACE, APPROACH SIDEWALK TRANSITIONS, AND CURB RAMP CLEAR OF OBSTRUCTIONS THAT PROTRUDE ABOVE THE SURFACE.
 - FOR DIMENSIONS, REFER TO NJDOT DRAWING CD-606-3 AND CD-606-4.
 - CURB (DROPPED CURB) GUTTERLINE TO BE FLUSH WITH ROADWAY PAVEMENT THE ENTIRE WIDTH OF THE RAMP (4 FEET MIN.) AT ALL CURB RAMPS.
 - FOR CURB RAMP TYPES 5 AND 6, IF A GRASS BUFFER DOES NOT EXIST, SLOPE CURB TO EQUAL SLOPE OF ADJACENT CURB RAMP.
 - SIDEWALK AND CURB RAMP WITHIN AREA ENCLOSED BY HEAVY LINES INDICATES THE PAY LIMIT FOR CONCRETE SIDEWALK OF THE APPROPRIATE ADJACENT THICKNESS.
 - CURB AND HEADER WITHIN AREA ENCLOSED BY HEAVY LINES INDICATES THE PAY LIMIT FOR VERTICAL CURB OR SLOPING CURB OF THE APPROPRIATE ADJACENT SIZE AND KIND.
 - WHERE THE DISTANCE FROM THE GUTTER LINE TO THE OUTSIDE EDGE OF SIDEWALK IS 6 FEET OR LESS, USE CURB RAMP TYPE 7, INSTEAD OF CURB RAMP TYPE 1 THROUGH 4.
 - CROSSWALKS AND STOP LINES MAY BE MARKED OR UNMARKED. SEE PLANS.
 - THE 12H:1V MAX SLOPE IS THE RUNNING SLOPE FOR TYPE 3 AND TYPE 4 CURB RAMPS. ENSURE THE RUNNING SLOPE OF CURB RAMPS DOES NOT REQUIRE ITS LENGTH TO EXCEED 15 FEET. THE RUNNING SLOPE MAY EXCEED THE 12H:1V MAX SLOPE SO AS NOT TO EXCEED THE 15 FEET MAXIMUM LENGTH.
 - CURB RAMP TYPE 1 THROUGH 7 ARE NORMALLY PLACED ON THE RADIUS RETURN AT THE INTERSECTION AND ON A TANGENT SECTION AS DRAWN.



DROPPED CURB AND CRADLE



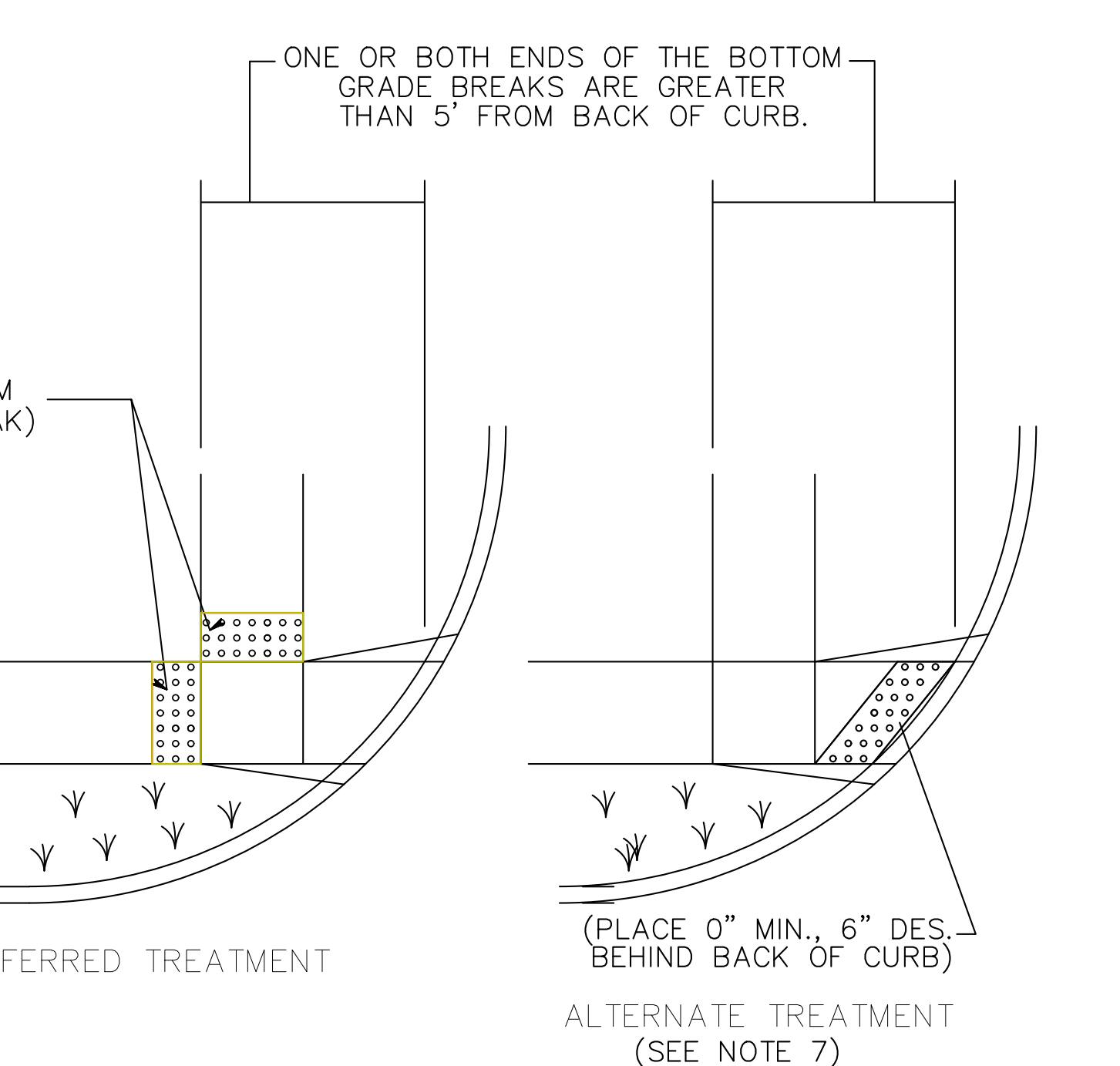
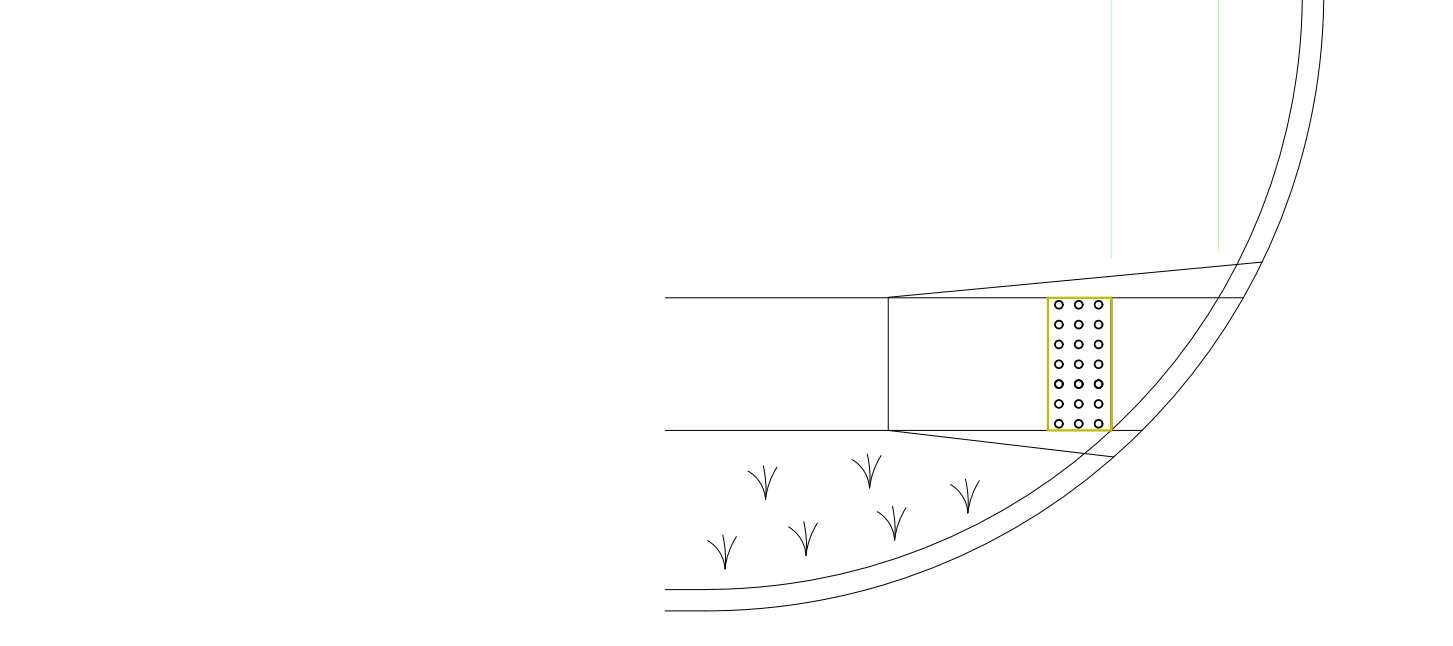
DETECTABLE WARNING SURFACE



LOCATION OF CURB RAMP TYPES 1, 2, 3, 4, & 7 FOR CROSSING PARALLEL AND PERPENDICULAR TO HIGHWAY

- NOTES:
- KEEP TURNING SPACE, APPROACH SIDEWALK TRANSITIONS, AND CURB RAMP CLEAR OF OBSTRUCTIONS THAT PROTRUDE ABOVE THE SURFACE.
 - CROSSWALKS AND STOP LINES MAY BE MARKED OR UNMARKED. SEE PLANS.
 - FOR NARROW ISLAND WIDTH, SEE PEDESTRIAN REFUGE ISLAND WALKWAY OPENING AT INTERSECTIONS DETAIL.
 - FOR MEDIUM AND LARGE ISLAND WIDTH, SEE CURB RAMP TYPE 1 ON NJDOT DRAWING CD-606-1.
 - CONSTRUCT CURB RAMP TYPES 1, 2, 3, 4, & 7 PERPENDICULAR TO CURBLINE, AS SHOWN.
 - IF A CURB RAMP IS REQUIRED, THE LOCATION OF THE DETECTABLE WARNING SURFACE MUST BE AT THE BOTTOM OF THE RAMP AND WITHIN THE REQUIRED DISTANCE FROM THE RAIL.
 - A STANDARD DETECTABLE WARNING SURFACE (DWS) IS NOT AVAILABLE TO FIT THIS APPLICATION, AND THEREFORE ONE WILL NEED TO BE CUSTOMIZED. THE DWS SHOULD COVER THE ENTIRE WIDTH OF THE RAMP. THE ROWS OF DOMES ON THE DWS SHOULD FOLLOW THE DIRECTION OF TRAVEL OF THE RAMP, SO PEDESTRIANS WHO USE MOBILE DEVICES CAN TRACK BETWEEN THE DOMES.

- DETECTABLE WARNING PLATES TO BE INSTALLED ON HANDICAP RAMP AS PER RAMP DETAIL.
 - DETECTABLE WARNING PLATES SHALL BE "BRICK RED" CAST IN PLACE REPLACEABLE TACTILES AS MANUFACTURED BY ADA SOLUTIONS, INC. 800-372-0519, OR APPROVED EQUAL
 - PLATE TO BE INSTALLED IN STRICT CONFORMANCE WITH MANUFACTURERS SPECIFICATIONS AND MATERIALS. PLATE TO BE CAST INTO CONCRETE SIDEWALK
- BOTH ENDS OF THE BOTTOM GRADE BREAK ARE LESS THAN 5' FROM BACK OF CURB.



PLACEMENT OF DETECTABLE WARNING SURFACE FOR CURB RAMP TYPE 5 AND 6

ACCESSIBLE RAMP DECLINATION DETAIL

SCALE: N.T.S.

R.D. Green Engineering		Details	
Structural, Foundation, & Marine Engineering		The Big Cone	
1512 Atkinson Avenue, Somers Point NJ, 08244		1600 Tilton Road	
Phone 609-926-5182 Fax 609-926-5185		Northfield, New Jersey 82225	
		Block: 97, Lot: 8	
Date	Drawn By	Project No.	Sheet Number
12-17-21	BD		S5
Scale	Checked By	Drawing Number	
1/8"=1'-0"	RDG		
Robert Douglas Green, P.E. Professional Engineer New Jersey License No. 24GE026637			